

HD Q-Gun™ and S-Gun™ Series

300, 400, 500, 600 Amp MIG Guns

Issued Jan. 2013 • Index No. SPEC HDQS-1.4

400 amp Q-Gun™ MIG Gun shown with HD straight handle, medium 45° rotating neck, dual schedule switch and locking trigger.



A perfect fit for heavy equipment manufacturing, HD Q-Gun and S-Gun MIG Guns fuse maximum durability with superior comfort.

Stay-Tite™ Technology

Long-lasting power cable compression fittings and necks with large tapered gun connections combine to form the foundation of Bernard Stay-Tite™ Technology. This technology ensures optimal conductivity to increase weld consistency and lessen heat output while improving product durability.

All Guns are Not Created Equal.

A MIG gun should be durable, easy-to-use and customized to your specific application. Our MIG guns put you in control: you choose the options you need and we'll build a gun to last.

Centerfire™ Contact Tips, Nozzles and Diffusers are easy-to-use and high performing - they provide better arc starts, less spatter and more consistent welds - and also last up to three times longer than competitive brands.

One piece HD straight handle with rubber overmold is exceptionally durable and comfortable in multiple hand positions.

Armor protected standard locking trigger can be coupled with dual schedule switch, allowing guns to be performance matched to user preference.

Necks available in fixed, rotatable and multiple length options for optimal weld accessibility and improved operator comfort. Rotatable necks changeover without tools.

Jump Liner allows quick neck change and replacement of only most commonly worn or clogged liner area, which reduces the amount of time a gun is offline and minimizes inventory.

Back end with durable rigid strain relief and easily interchangeable direct plugs and trigger leads connect to wire feeders and machines from major manufacturers and allow simple maintenance.

CALIFORNIA PROPOSITION 65 WARNING

This product contains chemicals, including lead, known to the state of California to cause cancer, and birth defects or other reproductive harm. *Wash hands after use.*

Made with
Pride and without
Compromise in the **USA**

MIG Gun	Amperage Ratings				Description
	Duty Cycle				
	100% NEMA	100% CE	60% CE	35% CE	
Q300 / S300	350	320	370	470	CO ₂ Gas
	n/a	270	310	390	80%AR20%CO ₂
Q400 / S400	400	350	425	520	CO ₂ Gas
	n/a	285	350	440	80%AR20%CO ₂
Q500 / S500	500	420	480	575	CO ₂ Gas
	n/a	370	420	500	80%AR20%CO ₂
Q600 / S600	550	440	540	650	CO ₂ Gas
	n/a	420	500	550	80%AR20%CO ₂

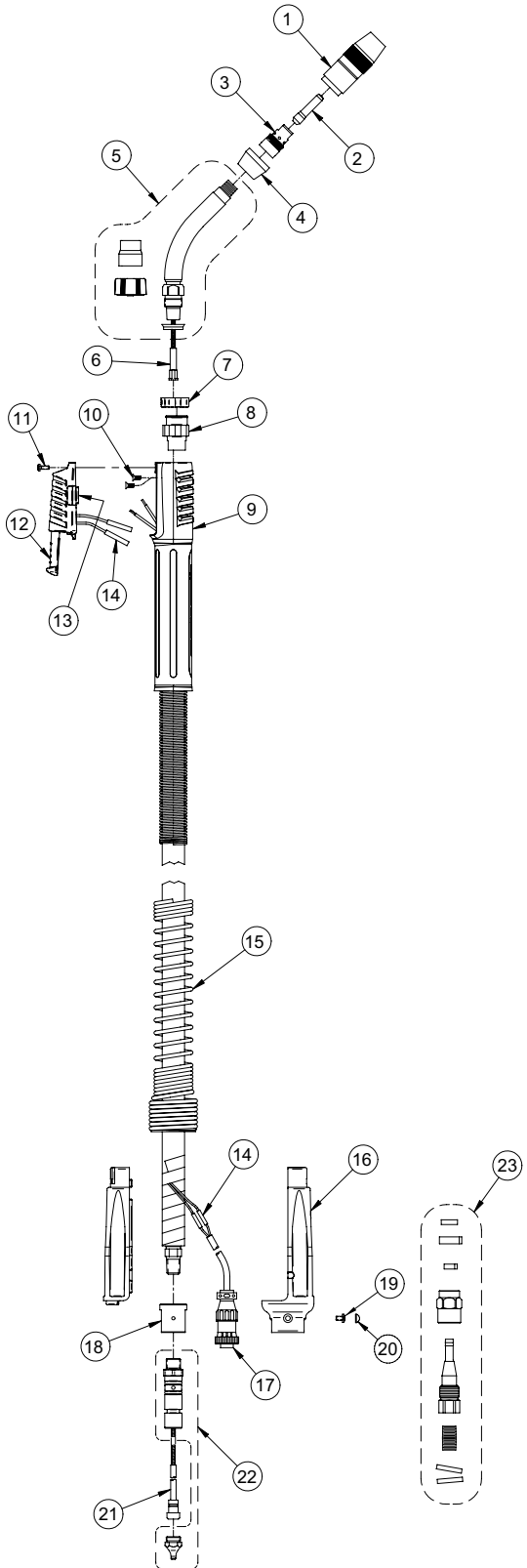
Bernard

An Illinois Tool Works Company
449 West Corning Road, Box 667
Beecher, Illinois 60401 USA

Phone: 800-946-2281 (US Only) 708-946-2281 (Outside US)
Fax: 708-946-6726
For more information, visit us at BernardWelds.com



Replacement Parts List



ITEM #	Q300 / S300 PART #	Q400 / S400 PART #	Q500 / S500 PART #	Q600 / S600 PART #	DESCRIPTION
1	See Centerfire Spec Sheet				Nozzle Assy
2	See Centerfire Spec Sheet				Contact Tip
3	See Centerfire Spec Sheet				Gas Diffuser
4	See Centerfire Spec Sheet				Cap
5	See Neck Spec Sheet				Neck
6	See Jump Liner Spec Sheet				Jump Liner
7	1780074				End Cap
8	1680056				End Fitting, Q Tube Receiver
9	1880239				Handle Kit (Includes Handle Screw)
10	2280049				Handle Screw (2 Req'd)
NS	Q300 / Q400 1680058		Q500 / Q600 1680055		Stay-Tite™ End Fitting
	S300 / S400 1680068		S500 / S600 1680067		
NS	1540012		1540011		Stay-Tite™ Cone Nut
NS	407709-013				Jacket Clamp (2 Req'd)
NS	Q300 4991	Q400 1520017	Q500/Q600 4993		Conduit Clamp (2 Req'd)
	S300 N/A	S400 N/A	S500/S600 N/A		
11	2280059				Handle Screw
12	2690064				Trigger Assy, Std., Locking (Includes 2 Butt Connectors & Std. Plug)
	2690067				Trigger Assy, Dual Schedule, Locking (Includes 4 Butt Connectors & D/S Cover)
13	2190009				Plug, Std. Trigger (Req'd for Std)
	2690062				Speed Switch Cover (Req'd for D/S)
NS	2620078				Leaf Spring, Dual Schedule (Req'd for D/S)
14	4932				Butt Connector (4 Req'd Std., 8 Req'd D/S)
15	Q300 2520033	Q400 thru Q600 2520041			Spring Strain Relief
	S300 thru S600 2520056				
16					Strain Relief Kit (Includes: Top & Bottom Halves)
	2520073				Strain Relief with Installed Gas Pin (Bernard Direct Plug)
	2520069				Strain Relief (Euro® Direct Plug)
	2520066				Strain Relief (All Other DP's)
17	GN2021				Electrical Plug-Non D/S (Not Req'd on Bernard or Euro® DP)
	20006A				Electrical Plug-D/S (Not Req'd on Bernard or Euro® DP)
18	1010027				Adapter Block (Not Req'd on Bernard or Euro® DP)
19	2280056				Screw, Strain Relief (Not Req'd on Bernard DP)
20	1620003				Screw Cover, Strain Relief (1 Req'd)
21	See Liner Spec Sheet				Liner
22	See Direct Plug Spec Sheet				Direct Plug Components
23	Q300 1983Q	Q400 1984Q	Q500 1985	Q600 1986	Rear Stay-Tite™ Repair Kit
	S300 N/A	S400 N/A	S500 N/A	S600 N/A	

Bernard™ is a trademark of Illinois Tool Works Inc. Other brands mentioned are for reference only and are the registered trademarks of their respective companies, and are not affiliated with Illinois Tool Works Inc.

