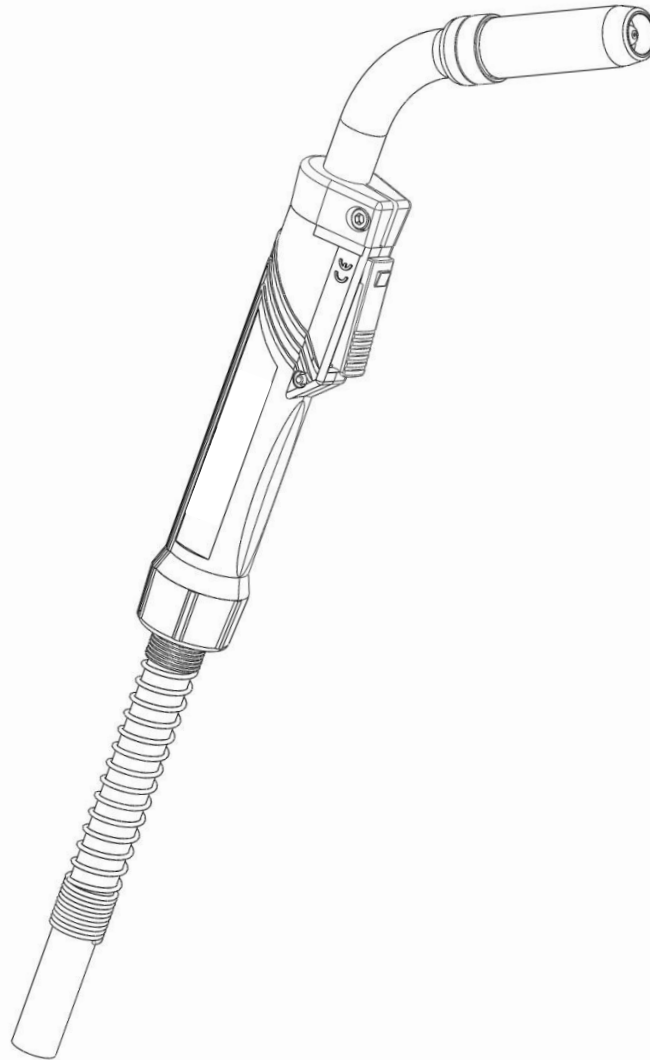




# SPEC SHEET

For 350 amp T-Gun™ Compact Series  
Semi-Automatic Air-Cooled MIG Guns



## AMPERAGE RATINGS

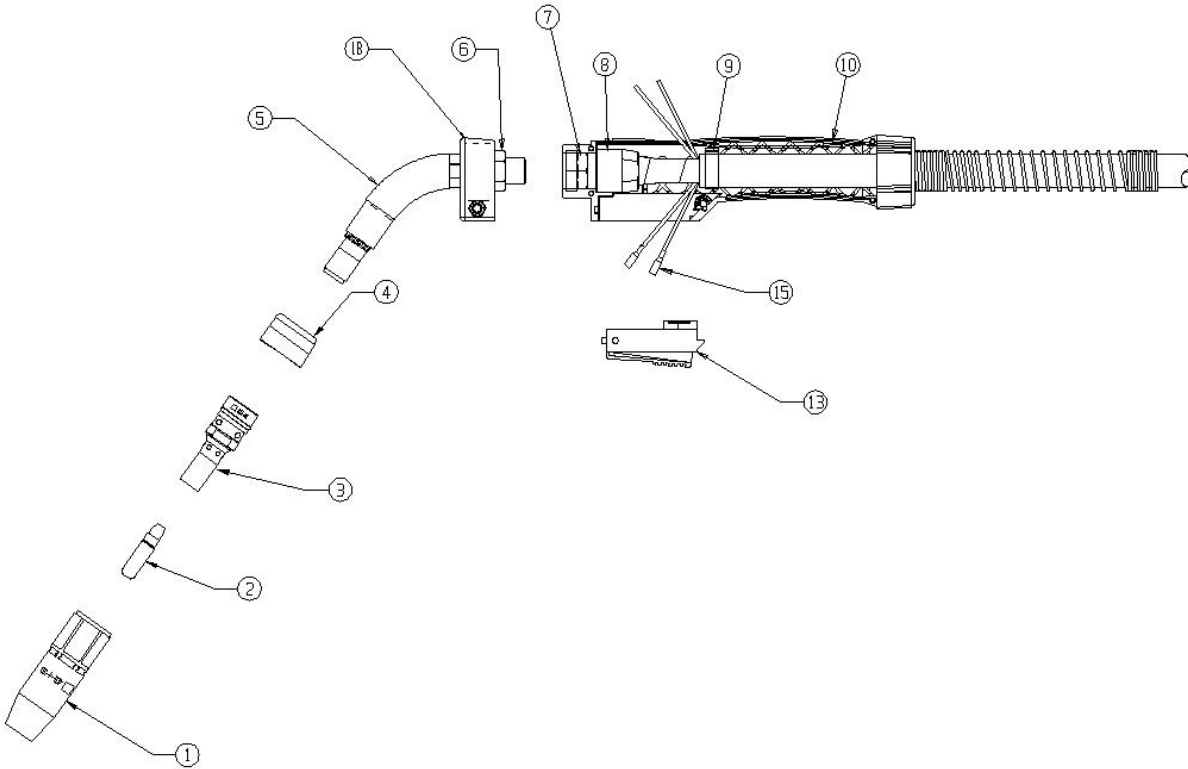
GUN MODEL	60% DUTY CYCLE - MIXED GASES OR 100% DUTY CYCLE - CO <sub>2</sub>
350 amp	350

*NOTE: Ratings are based on tests that comply with IEC 60974-4 standards.*

## STANDARD PARTS

GUN MODEL	NECK	NOZZLE	RETAINING HEAD	NECK INSULATOR	CONTACT TIP
350 amp	205-60	401-4-62	404-26	402-11	403-20-xx

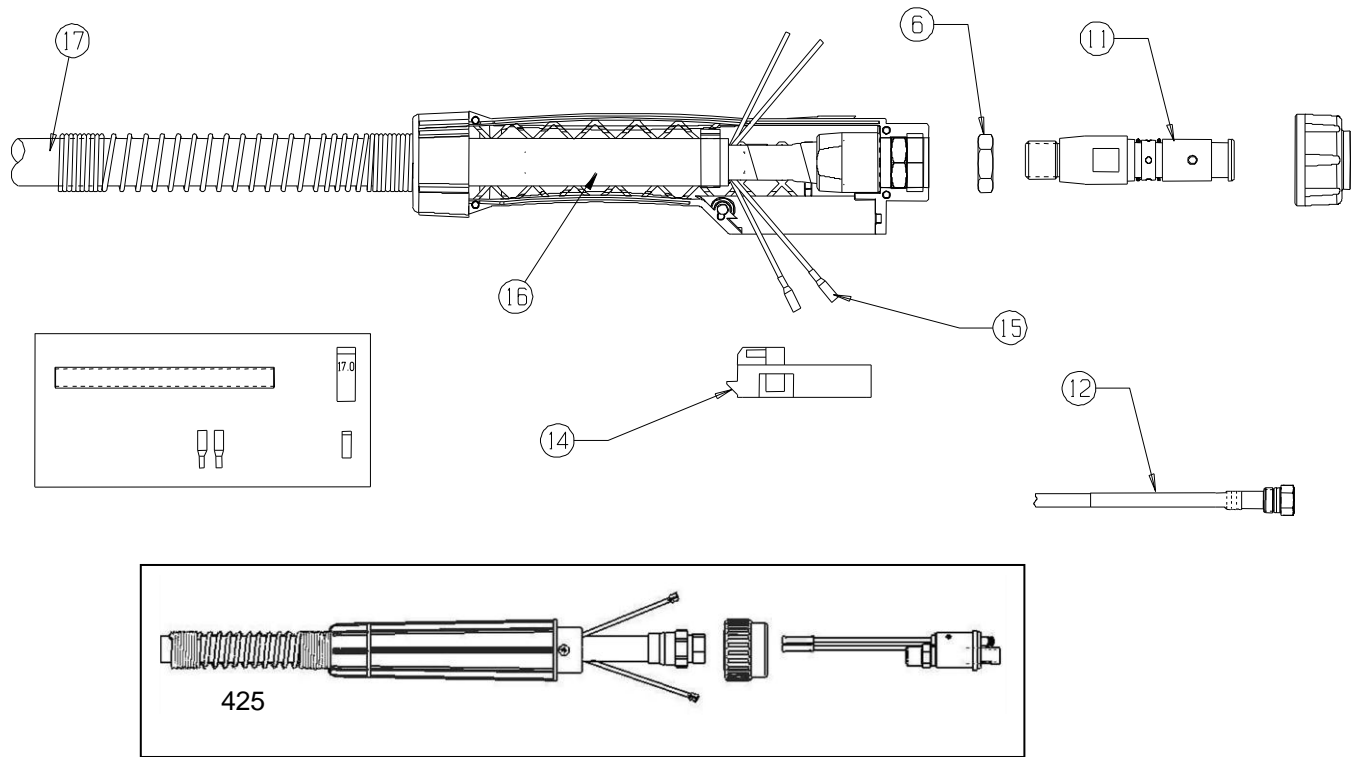
# EXPLODED VIEW AND PARTS LIST



Numbers in this column correspond to the exploded view images above.

PART #	DESCRIPTION
<b>1</b>	<b>STANDARD NOZZLES</b>
401-4-38	3/8" (10 mm) BORE - FLUSH
401-4-50	1/2" (13 mm) BORE - 1/2" (3 mm) TIP RECESS
401-4-62	5/8" (16 mm) BORE - 1/8" (3 mm) TIP RECESS (STANDARD)
401-4-75	3/4" (19 mm) BORE - 1/8" (3 mm) TIP RECESS
	<b>HEAVY DUTY NOZZLES</b>
401-5-62	5/8" (16 mm) BORE - 1/4" TIP RECESS
401-5-75	3/4" (19 mm) BORE - 1/4" TIP RECESS
401-6-50	1/2" (13 mm) BORE - 1/8" TIP RECESS
401-6-62	5/8" (16 mm) BORE - 1/8" TIP RECESS
401-6-75	3/4" (19 mm) BORE - 1/8" TIP RECESS
<b>2</b>	<b>HEAVY DUTY TREGASKISS™ TOUGH LOCK™ CONTACT TIPS</b>
403-20-30	FOR .030" (0.8 mm) WIRE
403-20-35	FOR .035" (0.9 mm) WIRE
403-20-1.0	FOR 1 mm WIRE
403-20-45	FOR .045" (1.2 mm) WIRE
403-20-364	FOR 3/64" (1.2 mm) WIRE

PART #	DESCRIPTION
<b>3</b>	404-26 TREGASKISS™ TOUGH LOCK™ RETAINING HEAD
454-1-2	RETAINING RING ONLY
<b>4</b>	402-11 NECK INSULATOR
<b>5</b>	205-60 STANDARD NECK - 60°
205-45	OPTIONAL NECK - 45°
<b>6</b>	208-2 JAM NUT
<b>7</b>	CONNECTOR CONE (INC. IN 313-9 REPAIR KIT)
<b>8</b>	CONE NUT (INC. IN 313-9 REPAIR KIT)
<b>9</b>	OETIKER CLAMP - 17 mm (INCLUDED IN 313-9 REPAIR KIT)
<b>10</b>	320 2-PIECE HANDLE (INC. CAPS AND SCREW)
320 - 2	FRONT LOCKING CAP
320 - 3	REAR LOCKING CAP
310-1-6 (10)	SCREW FOR 2-PIECE HANDLE (6-32 X 5/8" BLACK)



PART #	DESCRIPTION
<b>11</b>	
214	POWER PIN #4
414-1	O-RING – TWECO®
414-2	LINER SET SCREW
214-1	MILLER® POWER PIN (ALL MODELS EXCEPT 10 & 30 FEEDERS)
214-2	LINCOLN® POWER PIN
214-4	L-TEC®
214-13	PANASONIC®
214-12	#5 POWER PIN * 214-400 (ADAPTER NEEDED WITH THIS PIN)
<b>12</b>	
	<b>TREGASKISS™ QUICK LOAD™ LINERS (LINER RETAINER NOT INCLUDED)</b>
	<b>TREGASKISS QUICK LOAD LINER RETAINER (3/32" ONLY)</b>
415-24	<b>TREGASKISS QUICK LOAD LINER RETAINER</b>
415-26	<b>TREGASKISS QUICK LOAD LINER RETAINER</b>
415-30-15Q	FOR .030" (0.7 mm) WIRE, 15' (5 m)
415-35-10Q	FOR .035" - .045" (0.9 mm - 1.2 mm) WIRE, 10' (3 m)
415-35-15Q	FOR .035" - .045" (0.9 mm - 1.2 mm) WIRE, 15' (5 m)
415-30-25Q	FOR .035" - .045" (0.9 mm - 1.2 mm) WIRE, 25' (8 m)
415-116-10Q	FOR .045" - 1/16" (1.2 mm - 1.6 mm) WIRE, 10' (3 m)
415-116-15Q	FOR .045" - 1/16" (1.2 mm - 1.6 mm) WIRE, 15' (5 m)
415-116-25Q	FOR .045" - 1/16" (1.2 mm - 1.6 mm) WIRE, 25' (8 m)
415-564-15Q	FOR 1/16" - 5/64" (1.5 mm - 1.9 mm) WIRE, 15' (5 m)
415-332-15Q	FOR .078" - 3/32" (1.9 mm - 2.3 mm) WIRE, 15' (5 m)
415-332-25Q	FOR .078" - 3/32" (1.9 mm - 2.3 mm) WIRE, 25' (8 m)
	<b>CONVENTIONAL LINERS</b>
415-23-15	FOR .023" (0.6 mm) WIRE, 15' (5 m)
415-30-15	FOR .030" (0.8 mm) WIRE, 15' (5 m)
415-35-10	FOR .035" - .045" (0.9 mm - 1.2 mm) WIRE, 10' (3 m)
415-35-15	FOR .035" - .045" (0.9 mm - 1.2 mm) WIRE, 15' (5 m)
415-35-2	FOR .035" (0.9 mm) ALUM. WIRE, 15' (5 m)
415-116-10	FOR .052" - 1/16" (1.2 mm - 1.6 mm) WIRE, 10' (3 m)
415-116-15	FOR .052" - 1/16" (1.2 mm - 1.6 mm) WIRE, 15' (5 m)
415-116-2	FOR 3/64" - 1/16" ALUM. WIRE, 15' (5 m)

PART #	DESCRIPTION
<b>13</b>	
211-5	SWITCH ASSEMBLY
211-5-8	EXTENDED LEVER USED WITH 211-5 SWITCH
<b>14</b>	216-1 CONTROL PLUG TERMINAL BLOCK
<b>15</b>	SWITCH LEAD CONNECTOR (INC. IN 313-9 REPAIR KIT)
<b>16</b>	SUPPORT TUBE (INC. IN 313-9 REPAIR KIT)
<b>17</b>	
321-10	<b>UNICABLE ASSEMBLY</b> 10' (3 m) SERVICE
321-12	12' (4 m) SERVICE
321-15	15' (5 m) SERVICE
<b>18</b>	320-6 LOCKING CAP
<b>NOT SHOWN</b>	417 QUICK CONNECT BLOCK ASSEMBLY
<b>NOT SHOWN</b>	FEED ADAPTORS (TO BE USED WITH 417 QUICK CONNECT BLOCK) EURO-CONNECTOR OPTION
313-9	UNICABLE REPAIR KIT

## INSERTING MIG GUN INTO A WIRE FEEDER

### For most power pins

1. Insert power pin to shoulder and secure.
2. Insert control plug to control housing of MIG gun.
3. Insert control plug into feeder.
4. Feed welding wire into power pin by hand and tighten drive rolls.



**NOTE:** On Lincoln feeders it is necessary to connect the gas hose to the barbed fitting on the power pin.

## GENERAL SAFETY

Before installation or operation of T-Gun MIG Guns, please read the safety precautions listed below.

1. Always wear a properly fitted welding helmet with the proper grade of filter plate and suitable welding gloves.
2. All exposed skin should be covered with flame resistant, protective clothing. **DO NOT WEAR CLOTHING MADE FROM FLAMMABLE SYNTHETIC FIBERS.**
3. Protective screens or barriers should be used to protect others from spatter, flash and glare while welding.
4. Prevent fires by ensuring that hot slag or sparks do not contact combustible solids, liquids or gases.
5. Ensure that operator's head is not too close to the arc and that adequate ventilation is available.
6. Constant repetitive motion may lead to cumulative trauma disorders.
7. Do not touch live electrical parts. The following should be checked to prevent electrical shock:
  - a. Equipment is adequate for the job, properly grounded and installed according to code.
  - b. Faulty or damaged equipment is repaired or replaced.
  - c. Proper operator maintenance is performed to prevent excess spatter accumulation in the nozzle, or the contact tip or other areas of the gun.
  - d. Electrical insulating components are in place and not damaged. Repair or replace if necessary.
  - e. Operator and his surroundings are not wet.
  - f. Cables are not wrapped around operator's body.
  - g. Equipment is off when not in use.
8. CSA Standard W117.2 CODE FOR SAFETY IN WELDING AND CUTTING obtainable from the Canadian Standards Association, Standards Sales, 178 Rexdale Boulevard, Rexdale, Ontario, Canada M9W 1R3.
9. ANSI Standard Z49.1 CODE FOR SAFETY IN WELDING AND CUTTING obtainable from the American National Standards Institute, 1430 Broadway, New York, NY 10018.

### **CALIFORNIA PROPOSITION 65 WARNING**

This product, when used for welding or cutting, produces fumes or gases which contain chemicals known to the State of California to cause birth defects and, in some cases, cancer.

This product contains chemicals, including lead, known to the State of California to cause cancer, and birth defects or other reproductive harm. *Wash hands after use.*

(California Health & Safety Code Section 25249.5 at seq.)



## ADDITIONAL TECHNICAL DATA

For additional Technical Data, including installation, maintenance, neck dimensions, options, accessories and troubleshooting, please visit the Technical Support section of the Bernard website at [BernardWelds.com](http://BernardWelds.com).



### For Customer Support:

U.S.A 800-946-2281  
International 708-946-2281  
[BernardWelds.com](http://BernardWelds.com)