



# SPEC SHEET

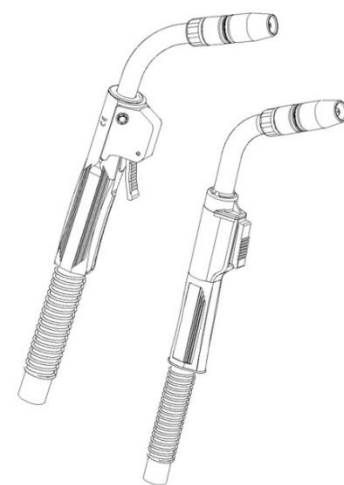
**For Air-Cooled MIG Guns**

**XS200, XS300 and XS400 amp**

## GENERAL SAFETY

Before installation or operation of TGX™ MIG Guns, please read the safety precautions listed below.

1. Always wear a properly fitted welding helmet with the proper grade of filter plate and suitable welding gloves.
2. All exposed skin should be covered with flame resistant, protective clothing. **DO NOT WEAR CLOTHING MADE FROM FLAMMABLE SYNTHETIC FIBERS.**
3. Protective screens or barriers should be used to protect others from spatter, flash and glare while welding.
4. Prevent fires by ensuring that hot slag or sparks do not contact combustible solids, liquids or gases.
5. Ensure that operator's head is not too close to the arc and that adequate ventilation is available.
6. Constant repetitive motion may lead to cumulative trauma disorders.
7. Do not touch live electrical parts. The following should be checked to prevent electrical shock:
  - a) Equipment is adequate for the job, properly grounded and installed according to code.
  - b) Faulty or damaged equipment is repaired or replaced.
  - c) Proper operator maintenance is performed to prevent excess spatter accumulation in the nozzle, or the contact tip or other areas of the gun.
  - d) Electrical insulating components are in place and not damaged. Repair or replace if necessary.
  - e) Operator and surroundings are not wet.
  - f) Cables are not wrapped around operator's body.
  - g) Equipment is off when not in use.
8. CSA Standard W117.2 CODE FOR SAFETY IN WELDING AND CUTTING obtainable from the Canadian Standards Association, Standards Sales, 178 Rexdale Boulevard, Rexdale, Ontario, Canada M9W 1R3.
9. ANSI Standard Z49.1 CODE FOR SAFETY IN WELDING AND CUTTING obtainable from the American National Standards Institute, 1430 Broadway, New York, NY 10018.



## CALIFORNIA PROPOSITION 65 WARNING

This product, when used for welding or cutting, produces fumes or gases which contain chemicals known to the State of California to cause birth defects and, in some cases, cancer.

This product contains chemicals, including lead, known to the State of California to cause cancer, and birth defects or other reproductive harm. *Wash hands after use.*

(California Health & Safety Code Section 25249.5 at seq.)



## STANDARD PARTS

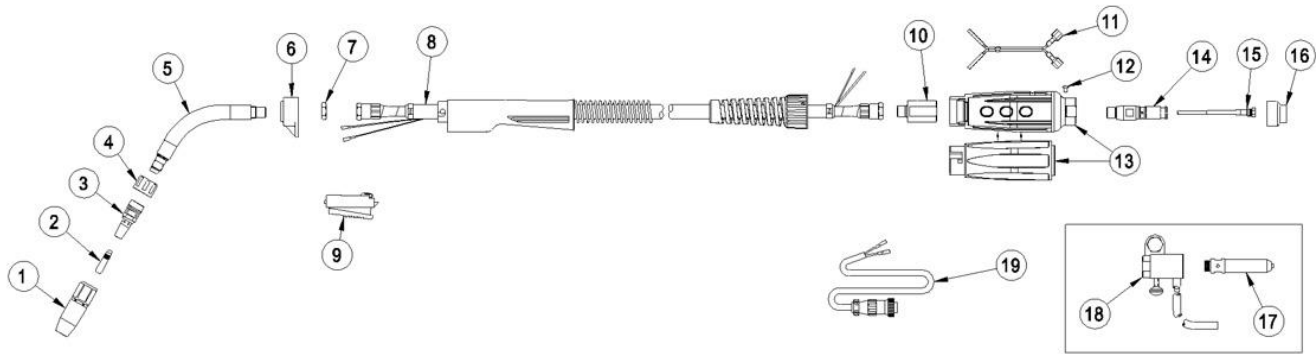
GUN MODEL	NOZZLE	CONTACT TIP	RETAINING HEAD	NECK INSULATOR	NECK	LENGTH (FT)	CHASSIS
200 amp (XS)	401-42-50	403-14-xx	404-18	402-7	205-60X	10	XS1810
						12	XS1812
						15	XS1815
300 amp (XS)	401-4-50	403-20-xx	404-26	402-7	205-60X	10	XS2610
						12	XS2612
						15	XS2615
400 amp (XS)	401-4-50	403-20-xx	404-26	402-7	205-60X	10	XS3210
						12	XS3212
						15	XS3215
						12	XL4012
						15	XL4015

# AMPERAGE RATINGS

CHASSIS MODEL	60% DUTY CYCLE - MIXED GASES OR 100% DUTY CYCLE - CO <sub>2</sub>
200 amp XS	180 amp
300 amp XS	260 amp
400 amp XS	300 amp

**NOTE:** Ratings are based on tests that comply with IEC 60974-4 standards.

# EXPLODED VIEW AND PARTS LIST – XS GUNS



<b>PART #</b>	<b>DESCRIPTION</b>
<b>1</b>	STANDARD DUTY NOZZLE (SELF-INSULATED)
<b>2</b>	403-14-xx STANDARD DUTY TREGASKISS TOUGH LOCK™ CONTACT TIP FOR 180 AMP (XS18xx)
	403-20-xx HEAVY DUTY TREGASKISS TOUGH LOCK CONTACT TIP FOR 260 AMP (XS26xx) & 300 AMP (XS32xx)
<b>3</b>	404-18 STANDARD DUTY TREGASKISS TOUGH LOCK RETAINING HEAD FOR 180 AMP (XS18xx)
	404-26 HEAVY DUTY TREGASKISS TOUGH LOCK RETAINING HEAD FOR 260 AMP (XS26xx) & 300 AMP (XS32xx)
<b>4</b>	402-7 NECK INSULATOR
<b>5</b>	205-60X NECK 60 DEGREE 200 AMP
<b>6</b>	210-6 HANDLE LOCK NUT
<b>7</b>	208-2 JAM NUT
<b>8</b>	CHASSIS
<b>9</b>	211-5 SWITCH ASSEMBLY
<b>10</b>	414-400x POWER PIN BLOCK
<b>11</b>	419-21 TGX JUMPER CABLE (SAME FOR ALL AMPERAGES)
<b>12</b>	S.B.H.C.S. - M4 x .7 x 6 LG
<b>13</b>	510X REAR HANDLE ASSEMBLY
<b>14</b>	214-xx POWER PIN
<b>15</b>	415-xx-xx LINER (CHOOSE CONVENTIONAL STYLE OR TREGASKISS QUICK LOAD™ LINER)
<b>16</b>	414-400-xx POWER PIN INSULATOR
<b>17</b>	418-xx FEEDER ADAPTOR
<b>18</b>	<b>FEEDER ADAPTOR REQUIREMENTS (SOLD SEPARATELY)</b>
	417 QUICK CONNECT BLOCK ASSEMBLY (TWEKO #4)
	417-60 QUICK CONNECT BLOCK ASSEMBLY (TWEKO #5)
	417-64 QUICK CONNECT BLOCK ASSEMBLY (MILLER TO EURO – DOES NOT REQUIRE FEEDER ADAPTOR ITEM 17 ABOVE)
	417-65 QUICK CONNECT BLOCK ASSEMBLY (TWEKO #4 TO EURO – DOES NOT REQUIRE FEEDER ADAPTOR ITEM 17 ABOVE)
<b>19</b>	419-xx CONTROL PLUG



M083 REV E 09/12

**For Customer Support:**

U.S.A. 800-946-2281  
International 708-946-2281  
Tregaskiss.com