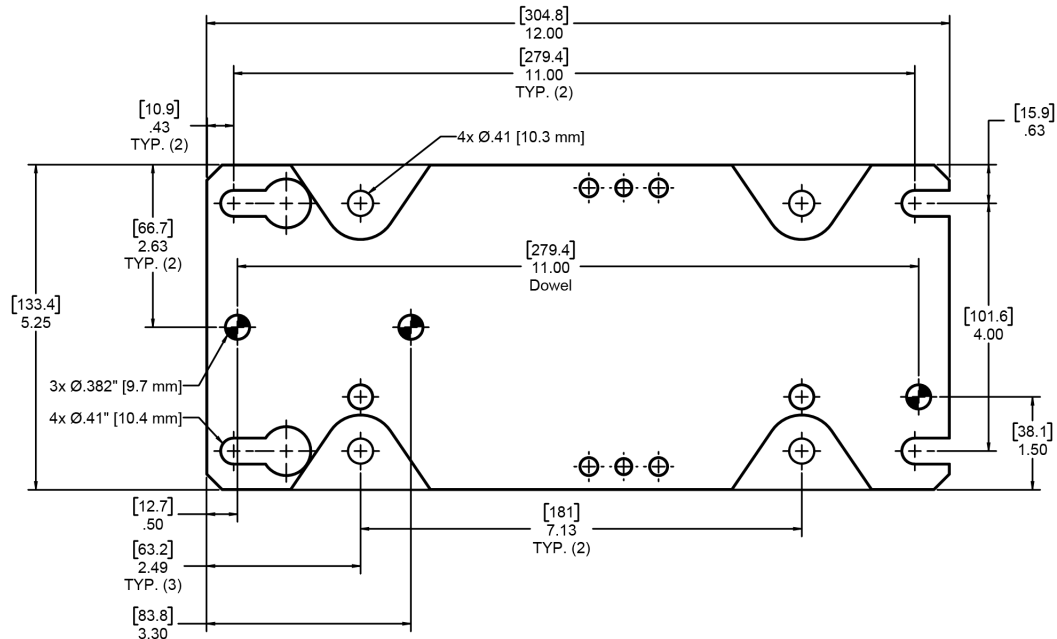


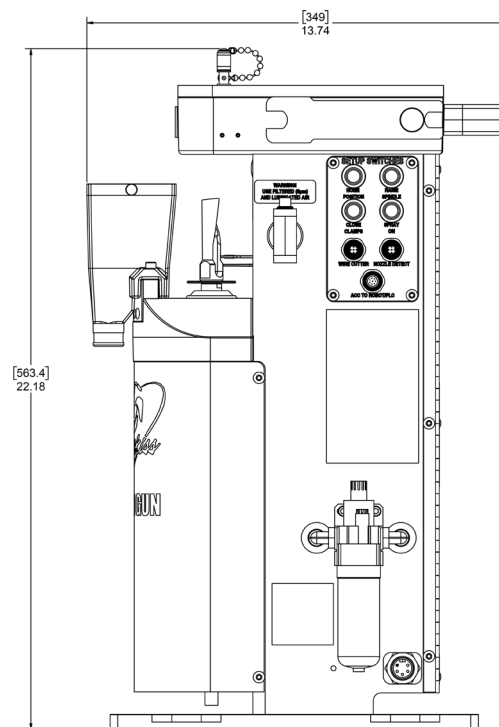
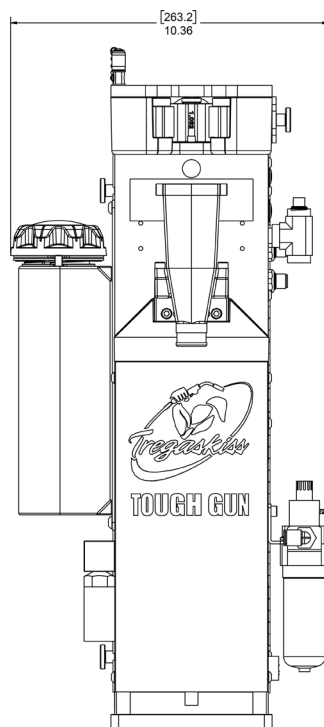
# How To Install the TOUGH GUN<sup>®</sup> Reamer

**WARNING:**  
Ensure power supply is off and disconnected before proceeding

## Mounting Hole Locations and Footprint



## Dimensions



## Mounting the Reamer

- The TOUGH GUN Reamer should be installed within the weld cell at a convenient location. Be sure to consider movable fixtures and the working envelope of the robot.
- Affix reamer base to sturdy platform using four (4) bolts

## Connecting the Air Supply

**WARNING:** Push Home Position button before connecting the air line

- Use only filtered, lubricated air
- Requirements: **IMPORTANT** — 80 to 100 psi at 16 CFM (5.0 - 7.0 BAR at 450 LPM) at the reamer during operation
- Use an air supply line with an inside diameter of 3/8". Connect 1/4" female NPT inlet located on the side of the reamer.



**Tregaskiss**  
2570 North Talbot Road  
Windsor, Ontario NOR 1L0  
Canada

Phone: 1-855-MIGWELD (644-9353) (US & Canada)  
+1-519-737-3000 (international)  
Fax: 519-737-1530  
For more information, visit us at [Tregaskiss.com](http://Tregaskiss.com)