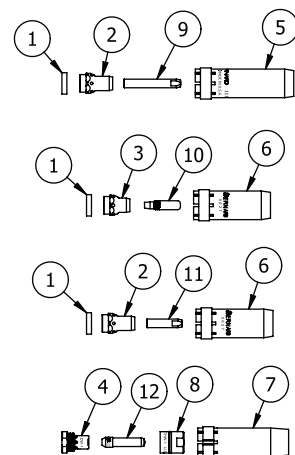
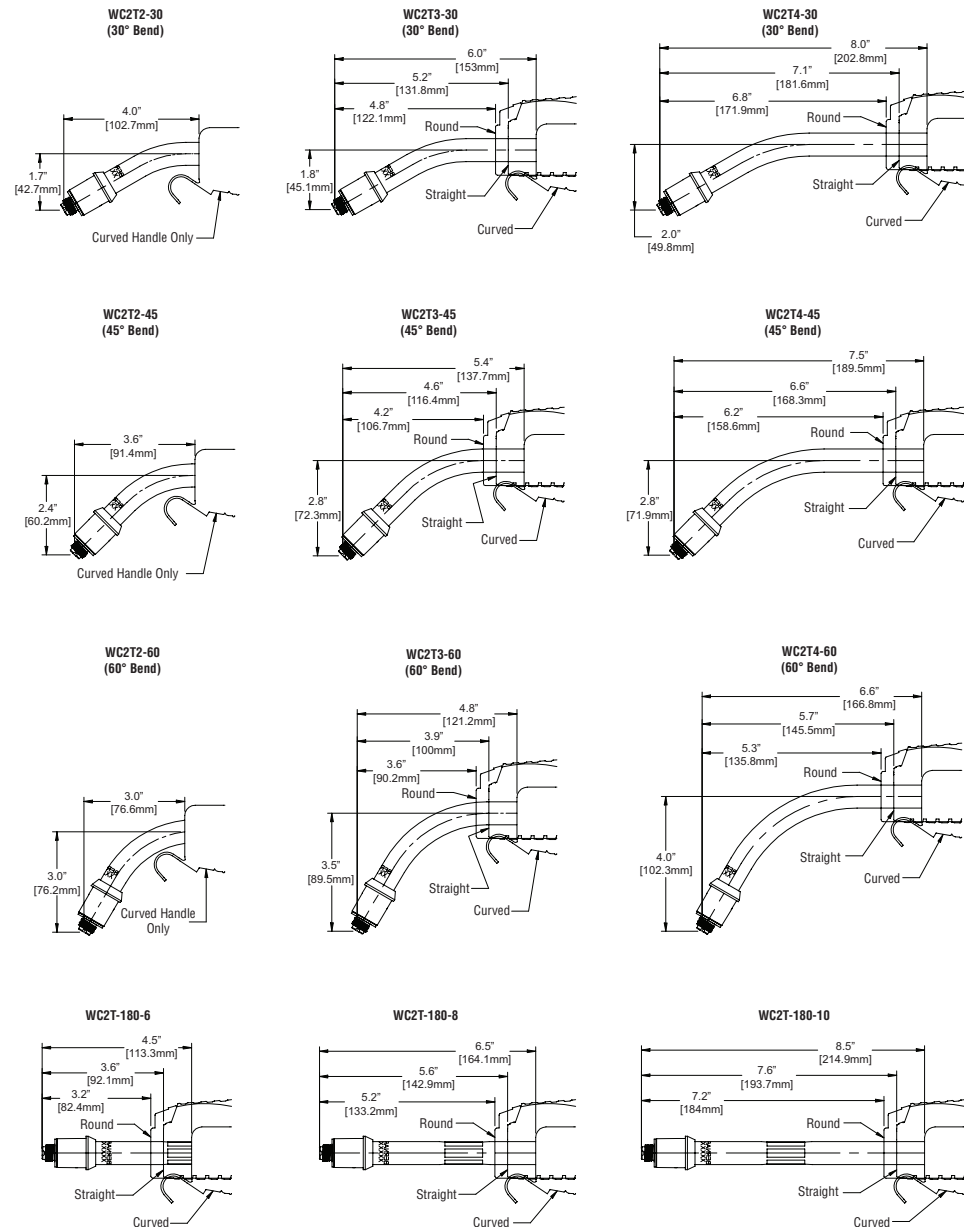


Available Necks and Consumables



Elliptical - 1500 Series

Quik Tip Series

Elliptical - 7400 Series

Centerfire Series

ITEM #	PART NUMBER	DESCRIPTION
1	1840003	Insulator
2	5623	Diffuser, Water-Cooled, Elliptical
3	1070101	Diffuser, Water-Cooled, Quik Tip
4	DW-1	Diffuser, Water-Cooled, Centerfire
5	1110007	Nozzle, Water-Cooled, 1/8" Recess, 1500 Series
6	5627	Nozzle, Water-Cooled, 1/8" Recess, 7400 & Quik Tip
	1110015	Nozzl, Water-Cooled, 3/16" Recess, 1/2" orifice, 7400 & Quik Tip
7	NW-3418C	Nozzle, Water-Cooled, 1/8" Recess, Centerfire
	NW-3414C	Nozzle, Water-Cooled, 1/4" Recess, Centerfire
8	THW-1	Tip Holder, Water-Cooled, Centerfire
9	See Elliptical Series Spec Sheet	Elliptical Contact Tip, 1500 Series
10	See Quik Tip Spec Sheet	Quik Tip
11	See Elliptical Series Spec Sheet	Elliptical Contact Tip, 7400 Series
12	See Centerfire Spec Sheet	Centerfire Tip

W-Gun™ Water-Cooled

600 amp MIG Guns

Issued Oct. 2020 • Index No. SPEC WCSA-1.7

All Guns are Not Created Equal.

A MIG gun should be durable, easy to use and customized to your specific application. Our MIG guns put you in control: you choose the options you need and we'll build a gun to last.

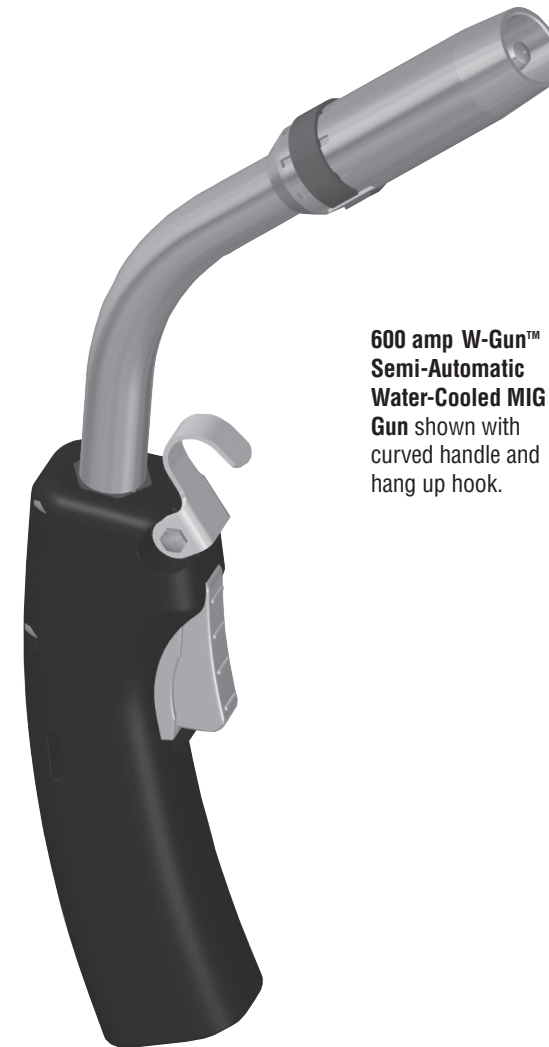
Flexible cable assembly with reinforced synthetic rubber hoses prevents water leakage and provides increased water flow and reduced gas leakage.

Newly designed back end and water block with interchangeable direct plugs and trigger leads connect to wire feeders and machines from most major manufacturers and allow for simple maintenance.

Curved handle with multiple trigger options to increase operator comfort.

Heavy duty water-cooled necks are offered in multiple length and bend configurations to allow for optimal weld accessibility and improved operator comfort.

Contact tip options include Centerfire™, Quik Tip™ and Elliptical, and are available in wire sizes from 0.023" (0.6 mm) to 3/32" (2.4 mm).



600 amp W-Gun™ Semi-Automatic Water-Cooled MIG Gun shown with curved handle and hang up hook.

Amperage Ratings

Amp	Duty Cycle	Description
600	100%	CO ₂ Gas
600	100%	80%AR20%CO ₂

Bernard

A Division of Miller Electric Mfg. LLC
449 West Corning Road
Beecher, Illinois 60401 USA

Phone: 1-855-MIGWELD (644-9353) (US & Canada Only)
1-519-737-3030 (International)
Fax: 708-946-6726
For more information, visit us at Tregaskiss.com



Replacement Parts List

ITEM #	PART NUMBER	DESCRIPTION
1	See Back Page	Consumables
2	See Back Page	Neck, Water Cooled
3	2300003	Set Screw (2 Req'd)
4	9176	Cable Tie
5	2520041	Spring Strain Relief
6		Rigid Strain Relief Kit (Includes Top & Bottom Halves)
	2520076	Strain Relief with Installed Gas Pin (Bernard Direct Plug)
	2520080	Strain Relief (Euro Direct Plug)
	2520077	Strain Relief (All Other Direct Plugs)
7a	2280056	Screw, Strain Relief (1 Req'd)
7b	1620003	Screw Cover, Strain Relief (1 Req'd)
8	2200122	Water Block Assembly
9	1520005	Clamp, Hose
10	2520033	Strain Relief, Hose
11	RSH-OUT	Hose Assembly, "Water Out"
12	RSH-IN	Hose Assembly, "Water In"
13	2950018	End Cap, Red
14	2950017	End Cap, Blue
15	658-2	Quick Connect Fitting, Male
16	1010027	Adapter Block (Not Req'd on Bernard or Euro Direct Plug)
17	See Direct Plug Spec Sheet	Direct Plug Components

ITEM #	PART NUMBER	DESCRIPTION
18	See Universal Liner Spec Sheet	Liner Assembly
19		Control Plug
	GN2021	Single Schedule (Not Req'd on Bernard or Euro Direct Plug)
	20006A	Dual Schedule (Not Req'd on Bernard or Euro Direct Plug)
20	1880198	Handle Kit, Standard Trigger (Includes Items 24 & 25)
		Handle Kit, Locking Trigger (Includes Items 24 & 25)
		Handle Kit, Dual Pull Trigger (Includes Items 24 & 25)
	DSA-1	Handle Kit, Dual Schedule, Standard Trigger
		Handle Kit, Dual Schedule, Locking Trigger
21	1790002	Hang Up Hook Kit (Includes Hook, Screw, & Post)
22	5662	Trigger, Standard
	5662L	Trigger, Locking
	2690001	Trigger, Dual Pull, 3 Wire (Includes Terminals)
23	2660001	Terminal, Quick Disconnect (2 Req'd)
24	4209	Screw, Handle (5 Req'd)
25	4207	Post Fastener (3 Req'd)
26	5626	Hex Bushing

ITEM #	8' (2.44 m)	10' (3.05 m)	12' (3.66 m)	15' (4.57 m)	20' (6.10 m)	25' (7.62 m)	DESCRIPTION
42	WC2CA-6	WC2CA-1	C2CA-2	WC2CA-3	WC2CA-4	WC2CA-5	Conduit Assembly (Replacement O-Ring Part #2040008)
43	RRH-08	RRH-10	RRH-12	RRH-15	RRH-20	RRH-25	Return Hose Assembly
44	RPC-08	RPC-10	RPC-12	RPC-15	RPC-20	RPC-25	Power Cable Assembly
45	RCS-08	RCS-10	RCS-12	RCS-15	RCS-20	RCS-25	Return Hose and Power Cable Set (Includes Items 43 & 44)
46	WC2CW-4	WC2CW-1	WC2CW-2	WC2CW-3	WC2CW-5	WC2CW-6	Control Wire Assembly (Includes Terminals)
47	WC2OC-6	WC2OC-1	WC2OC-2	WC2OC-3	WC2OC-4	WC2OC-5	Outer Cover
48	RCA-08	RCA-10	RCA-12	RCA-15	RCA-20	RCA-25	Cable Assembly (Includes Items 42, 43, 44, 46, & 47)

OPTIONAL ACCESSORIES (not shown)

PART #	DESCRIPTION
WC2HK-1	Water Cooler Hookup Kit Includes two 15' hoses and fittings to connect our gun to a water cooler.
WC2HK-2	Water Cooler Hookup Kit Includes two 30' hoses and fittings to connect our gun to a water cooler.

Replacement Parts List

